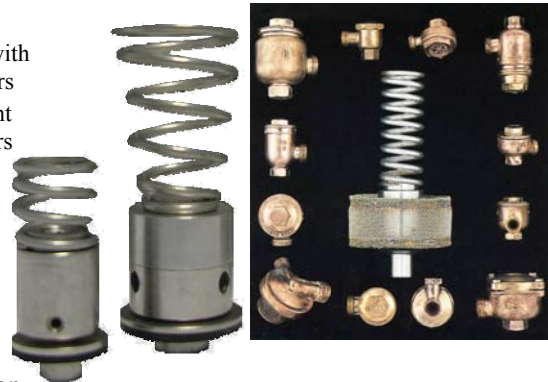


RADIATOR TRAP RETROFIT TECHNOLOGY

- APPLICATIONS:**
- STR -Constant to small varying loads & equipment with regulated loads; typically radiators & convectors
 - TDR -Constant to medium varying loads & equipment with unregulated loads; typically unit ventilators fan coils & unit heaters
- BENEFITS:**

- Efficient, consistent, economical operation
- No failing thermal elements or need for replacement parts
- Designed to fit into present body and cover
- Optimum control against energy losses & maintenance costs
- Large integral strainer provides for long maintenance-free operation



PRODUCT OF THE U.S.A. • U.S. PAT. #5,088,518

SPECIFICATIONS:

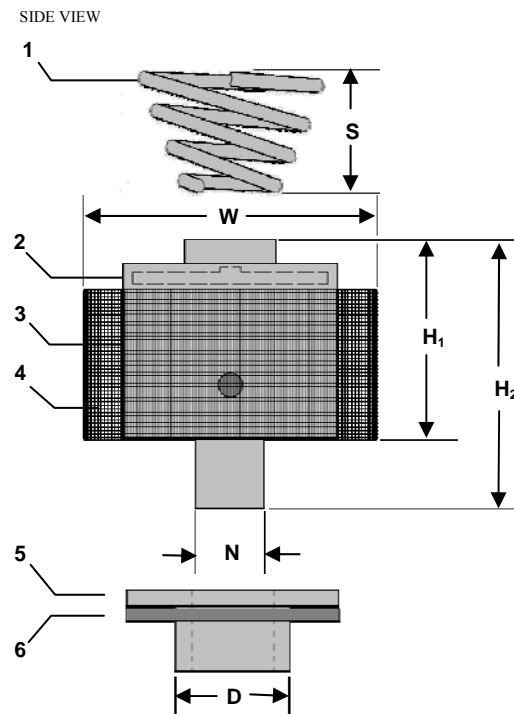
Model	Dimensions in Inches (mm)					
	H ₁	H ₂	N	W	S	D
STR	0.750 (19)	1.100 (28)	0.250 (6)	Varies ¹	Varies ¹	Varies ¹
TDR	0.900 (23)	1.250 (32)	0.350 (9)	Varies ¹	Varies ¹	Varies ¹

¹Determined by internal dimensions of trap body to be retrofitted

Part	Material
1 Securing Spring	Stainless Steel
2 Disc (TDR only)	Stainless Steel
3 Trapping Module*	Stainless Steel
4 Drum Strainer	40 Mesh Stainless Steel
5 Seat Adapter	Stainless Steel
6 Gasket	EPDM 70

Maximum Operating Conditions	
Pressure	50 psig (3.4 bar)
Temperature	280°F (138°C)

*NOTE: TECH-FITT® engineers specify appropriate trapping module for each application.



DESCRIPTION:

Radiator Trap Retrofits shall be secured inline using an existing radiator steam trap body (or by installing a new body). Retrofit shall have a trapping module that is interchangeable with any other radiator trap body for ease of sizing, cleaning, or exchanging without the need for a stock of replacement parts. All parts, except gasket, shall be manufactured from 300 Series Stainless Steel and will not wear out with usage.

The trapping module shall be of modular labyrinthine (STR) or thermodynamic (TDR) design and shall be protected on all sides by a 40 mesh wire drum strainer that is interchangeable with all other modules of the same model for simple exchanges and cleaning.

Retrofits shall be cleansable without having to disconnect the trap body from piping. Refer to appropriate installation instructions for proper configurations & other guidelines.

*Drawings are not to scale and dimensions are approximate.
Information provided (including materials, dimensions, and availability) is subject to change without notice.*